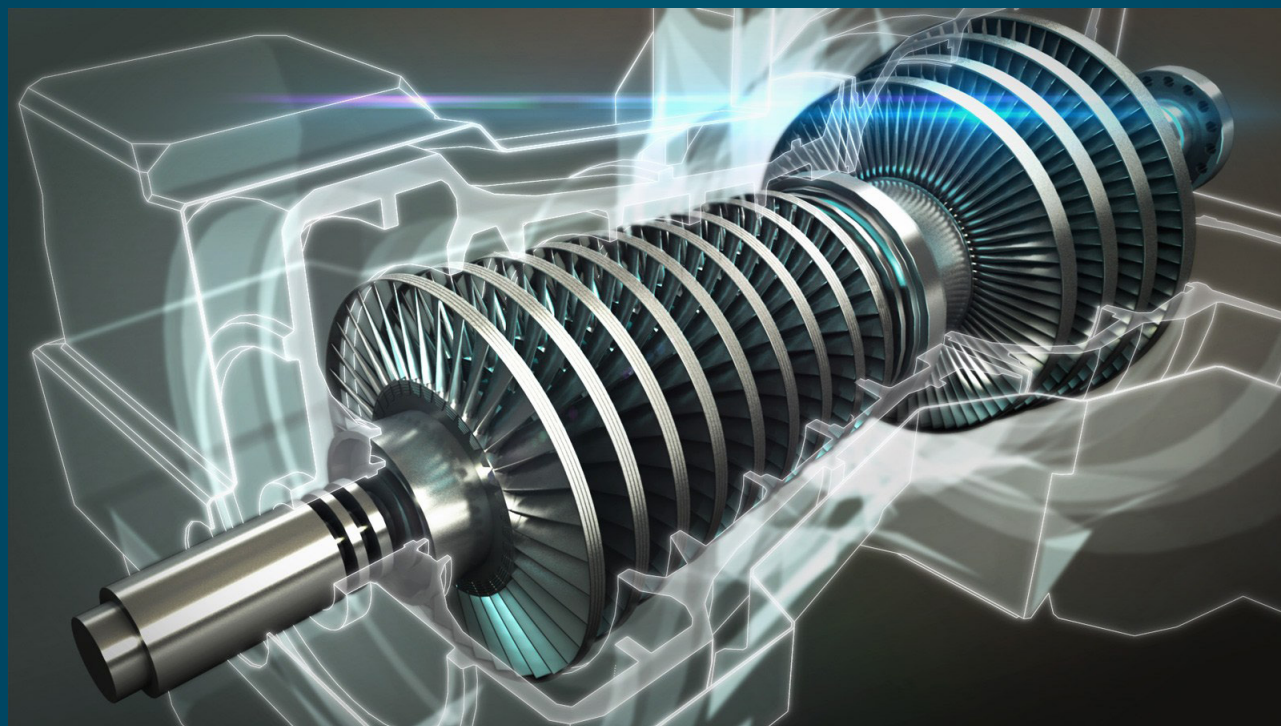


PREFERRED  
TURBOMACHINERY  
SERVICES IN MALAYSIA

STRIVING  
FOR THE  
EXCELLENCE



# Total Maintenance



# Solutions



Striving For The Excellence

**HIGHLY SKILLED ENGINEERING TEAM**  
Our success is driven by our people and their commitment to get the results in the right way for profitable growth

## About Us

TAKA Malaysia



## Helping You to Increase Your Revenue

TAKA Maintenance (Malaysia) Sdn Bhd (TMM) was incorporated on 11<sup>th</sup> November 2014, but the collaboration and establishment of the parties was way before that. This is based on the same idea to expand each business throughout other industries and geographic boundary.

With the global economic surroundings and implementation of integration of ASEAN economic community, it is our initiatives to take the challenges and adapting this new business environment. Leveraging on each others capabilities, we hope to grasp all opportunities herewithin this country.

With technical support and vast experience of PT Taka Turbomachinery Indonesia (TTI), we believe that we can offer a unique service to the malaysian market. Originally and based in Bandung, Indo-

nesia. TAKA has experienced in services and repairs for rotating equipment such as Gas Turbine, Steam Turbine, Centrifugal Pump, Centrifugal Compressor and other related turbomachinery equipment.

TAKA's workshop equipped with large and modern facilities such as large capacity of Lathe Machine, 80 ton Overhead Travelling Crane, high precision Schenck Balancing Machines, HVOF Thermal Spray System, Post Weld Heat Treatment, NDT equipment, CNC Milling Machine etc. Ready to support any request from Malaysia market.

Our success is driven by our people and their commitment to get results in the right way - by operating in full responsibility, executing with excellence, applying innovative technologies and capturing new opportunities for profitable growth.





**COMPANY MOTTO**  
We has grown into a wide scale company  
with a motto "Striving for the Excellence"

## Long Term Aim

To be the one-stop workshop and the largest non-OEM in service and repair of turbomachinery equipment.



### PT. Taka Turbomachinery

Located in Bandung, Indonesia

The long-term aim of TMM is to be the one-stop workshop and the largest non-OEM in service and repair of turbomachinery equipment including reverse-engineering. This long-term aim will be achieved through the investment of modern machine and equipment, opening branch of regional state in Malaysia, trained laborforce, and well-known market. The key of turbomachinery's service and repair is trained labour. To achieve this goal, TMM will develop the training centre for its labour intensively.

Be uphold by Service Excellent, Integrity, Growth, also Awareness in company culture, expected resources will achieve Professionalism. With a highly skilled engineering team who understand the process requirements, we can provide services suited to exact requirements for customer satisfaction with any industrial standard. We realize that sustainability of this company depends on our quick response to the market, exploring smart solution to the customer problems and deliver the service in the fastest way with the best quality and cost efficiency.

### 1 Our Vision

To be the preferred turbomachinery services and become a trusted partner in Malaysia.

### 2 Our Mission

To build long-term strategic business partnership with our clients by encouraging and practicing open and honest communications, and delivering on our promise of excellent services.

## Our Expert Service



### Workshop Repair

Fully equipped workshop and facility with wide range of machine tools also appropriate inspection to facilitate workshop repair activities.



### On-Site Repair & Machining

We are able to solve a problem that might occur at the field. The ultimate output is to help the customer in terms of delivery time and risk in transit.



### Welding Repair

With the scope of work ranging from re-ladding, welding, HVOF coating, hot gas parts repair, total overhaul, casing repair and impeller repair.



### Refurbishment/Recondition

All types of rotating equipment's repair & refurbishment, regardless of the original equipment. Provides in-house services for most of mechanical & metallurgical problems.



### Electrical Services

As electrical parts very closely related to rotating equipment, we do establish our expertise for this related services.



### Field Services

We also has mobile equipment that could be dispatched to our customer plant site to carry out on-site repair activities.



# Our Services

Our company offers a wide range of services such as repair and recondition of turbomachinery equipment, reverse engineering, and field service.



Since 1999, turbomachinery repair service has become company experience that came from variety industries. Such as electricity, oil and gas, fertilizer, also petrochemical etc. The company has grown into a wide scale company with a motto “Striving for the Excellence”. Our company now offers a wide range of services such as shop repair and recondition of turbomachinery equipment, reverse engineering, and field service. We also providing services for Rotating Equipment such as Gas Turbine, Steam Turbine, Centrifugal Pump, Centrifugal Compressor and other related turbomachinery equipment.

**SAFE WORKING ENVIRONMENT**  
Our commitment to safety also goes further into helping our customers in the safe operation and maintenance of our services

## Mechanical Services

Supported with the complete and adequate equipment, we are experience in performing mechanical repairs for rotating equipment.

- 1

**Workshop Repair**

Fully equipped workshop and facility with wide range of machine tools also appropriate inspection to facilitate workshop repair activities.
- 2

**Welding Repair**

With the scope of work ranging from rebladding, welding, HVOF coating, hot gas parts repair, total overhaul, casing repair and impeller repair.
- 3

**Refurbishment /Recondition**

All types of rotating equipment’s repair & refurbishment, regardless of the original equipment. Provides in-house services for most of mechanical & metallurgical problems.

Refurbishment/Recondition			
No.	Industry	Product	Standard
1.	Oil & Gas, HPI, Power Generation, Pulp and Paper	<ul style="list-style-type: none"><li>Gas Turbines</li><li>Steam Turbines</li><li>Turbo Compressor</li><li>Centrifugal Pump</li><li>Others Rotating Equipment</li></ul>	API 610,611, 612, 613 ,617, 687 or Cust. Req.

**REFURBISHMENT/RECONDITION**  
Have been used by various industries such as Oil & Gas, Hydrocarbon Processing, Power Generation, Pulp & Paper Industries

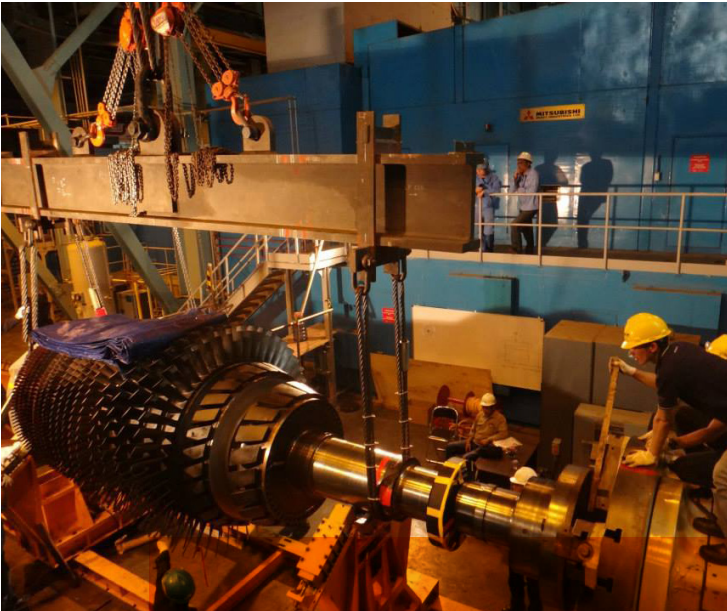
**WELDING REPAIR**  
Have been used by various industries such as Oil & Gas, Hydrocarbon Processing, Power Generation, Pulp & Paper Industries

Welding Repair			
No.	Industry	Product	Standard
1.	Oil & Gas, HPI, Power Generation, Pulp and Paper	<div><div>1. Re-Babbitt Sleeve Bearing</div><div>2. Impeller Rebuild</div><div>3. Gas Turbine Part :<ul style="list-style-type: none"><li>Seal Housing</li><li>Flow Sleeve</li><li>Combustion Liner</li><li>Cross Fire Tube</li><li>Nozzle</li><li>Etc</li><li>Welding Repair of Disc Steam Turbine</li><li>Welding Shaft</li></ul></div></div>	Cust. Req.

# On-Site Repair & Machining

With qualified manpower, we are able to solve a problem that might occur at the field . The ultimate output is to help the customer in terms of delivery time and risk in transit. We also has mobile equipment that could be dispatched to our customer plant site to carry out on-site repair activities. By offering this special service, we deliver some benefits to our customer such mitigate the risk during rotor transportation (no need mobilization and de-mobilization of the rotor) and time efficiency which reduce potential production loss of the power generation.

**FLEXIBILITY & INNOVATIVE SOLUTIONS**  
When there is an unscheduled break down equipment, we are welcomes to carry out either workshop or on-site repair to solve our customer’s problem in order to bring the equipment back to normal operation again as quickly as possible.



## Electrical Services

As electrical parts very closely related to rotating equipment, we do establish our expertise for this related services. All our services based on below:

- Motor/Generator Services**
  - Electromotor and generator repair for low, medium and high voltage (rewinding)
  - Scheduled maintenance electromotor and generator (overhaul low ~ high voltage)
  - Create, service & repair commutator and carbon brush
- Transformer Repair Services**
  - Rewinding and repair
  - Transformer testing
  - Redesign/refurbishment
  - Transformer sales
- Transformer & Electro-motor Assessment**
  - Predictive maintenance Trans-former (a) Online test – dissolved gas analyzes, furrant test (b) Offline test – ratio, insulation, winding resistance, tangen delta
  - Transformer Oil Treatment
  - Motor/Generator Performance Test (a) Online test – vibration, thermo vision (b) Offline Test – surge test, hi-pot, resistance, tangen deta partial discharge test, winding analyzer.
- Cable Assessment Services**

Assess, analyze and determine condition of underground power cable (20kva-40kva), include fault locator and cable mapping.



# Value-Added Services

As reliable partner with extensive experience, we offer smart solution & delivers the service in the fastest way with the best quality and cost-efficient.



To support the needs of spare parts from industrial machines we provide the solutions to do reverse engineering. The advantage of this is that it can reduce the cost and time compared with the procurement of parts from OEM. Our engineers are dedicated to ensure all the necessary technical requirements needed and would develop a customized repair procedure and schedule that meet customer's specific requirements. Also assist with state-of-the-art analysis such as Reverse Engineering, Root-Cause Failure Analysis, Material Analysis and Evaluation. In repairing process, parts may need to be replaced in order to restore your equipment and optimize its performance.

**FULL REVERSE OF ENGINEERING CAPABILITIES**  
Help you extend the lifetime of your equipment & improved the process to design. With our broad knowledge and technologies, we can advise on improvement possibilities of your component needs.

# Reversed Engineering Design

We provide the solutions to do reverse engineering. The advantage of this is that it can reduce the cost and time compared with the procurement of parts from OEM.

## 1 Compressor Parts

Compressor Parts (API 617)  
1. Labyrinth Seal  
2. Thrust Ring (Collar)  
3. Interstage Sleeve  
4. Shaft  
5. Bearing Bushing & Sleeve Bearing

## 2 Centrifugal Pumps Parts

Centrifugal Pumps Parts (API 610)  
1. Stationary Parts:  
□ Bushing  
□ Case Wear Ring  
2. Rotating Parts:  
□ Impeller  
□ Impeller Wear Ring  
□ Sleeve  
3. Bearing:  
□ Bushing Bearing  
□ Sleeve Bearing  
4. Pump Shaft

## 3 Turbine Parts

Turbine Parts (API 612 & 611)  
1. Seal:  
□ Labyrinth Seal  
□ Oil Collecting Cover  
□ Carbon Seal  
2. Ring:  
□ Thrust Ring (Collar)  
□ Counter Thrust Ring  
□ Chamber Ring  
□ Flange Ring  
□ Splash Ring  
3. Interstage Sleeve  
4. Coupling  
5. Turbine Disc  
6. Shaft  
7. Bearing:  
□ Bushing Bearing  
□ Sleeve Bearing  
8. Gear (API 613)



# Condition Monitoring

Snapshot-taking activity consisting of measurement, analysis and diagnosis of:

- Vibration Data (Di compressor, pump, blower fan)
- Combustion Pressure (Diesel engine)
- Thermography
- Oil Analysis (Tribology)
- Electrical Analysis (Electric Motor)

This activity can be done under several conditions:

- Newly installed engine testing
- Before/after overhaul
- Before/after part replacement
- Before/After system replacement

**EQUIPMENT DIAGNOSTIC (PERFORMANCE ANALYSIS)**  
Performance Analysis is an engine condition snapshot-taking activity consisting of measurement, analysis and diagnosis



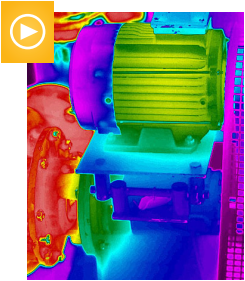
# Predictive Maintenance

It includes engine condition measurement, analysis and diagnosis (performance analysis) periodically done within certain time(1-3 years). Such regular period of time makes it possible to do trend analysis of operation parameters towards Reliability Centred Maintenance.



## Vibration Analysis

Mechanic vibration data are very important to show the equipment conditions. Among the things that can be known from this analysis are:  
□ Damage or early weathering of moving components  
□ Misinstallment  
□ Symptom of abnormal engine



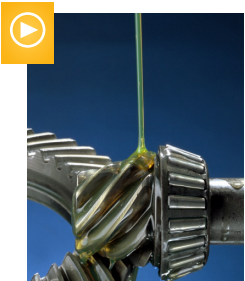
## Thermography

Thermal data are important physics data to see the operational condition of an equipment. We perform this by using thermography camera with the newest technology to detect possible interferences or to equip the predictive maintenance data.



## Advanced System Troubleshooting

- 1. Rotating Machinery  
□ Balancing  
□ Vibration Reduction  
□ Operation pattern Analysis  
□ Failure Analysis (decreasing the continuous failure)  
□ Electric analysis
- 2. Reciprocating Machinery  
□ Vibration Reduction  
□ Equipment Efficiency Analysis



## Oil Analysis (Tribology)

Oil analysis is done by doing sampling of equipment lubricating oil. Among the benefits of tribology:  
□ Identifying the system defect which is not detected by vibration analysis  
□ Identifying the leakage or contamination of an oil system  
□ Evaluate the condition of lubricant for replacement/refill



# Our Facilities

We are also an ISO 9001-2008 & ISO 14001-2004 Quality System Certified Company, and Contractor Health and Environment Safety Management (CHESM) Certificate for Rotating Equipment and other related turbomachinery equipment.



## FULLY INTEGRATED WORKSHOP AREA

Operated with 80 Tons lifting capability, total building area more than 5000 m<sup>2</sup> and employed more than 100 workers.

Our facilities in Bandung, Indonesia support jobs in the workshop and onsite job to repair or to manufacture turbine gas component, steam turbine, turbo compressor and other rotating equipment.

1. A more than 7000m<sup>2</sup> company office Located in Bandung
2. Large capacity of lathe machine
3. Overhead Traveling Crane (OHTC) With up to 80 ton capacity
4. High precision of Schenk Balancing Machine (3 ton & 32 ton rotor weigh capacity)
5. High Velocity Oxygen Fuel (HVOF) Coating Machine
6. Post Weld Heat Treatment (PWHT)
7. Non Destructive Testing (NDT) & Special Inspection Equipment
8. Computer Numerical Services (CNC) Machining Centre HURCO (Vertical Machining X42) 3 unit
9. Coordinate Measuring Machine (CMM)
10. Transportable Lathe Machine & Laser Welding Machine
11. Positive Material Identification (PMI)
12. Schenk Smart Balancer & Laser Alignment Equipment



# Shah Alam Office

We strongly believe with our experience and exposure, we have the ability and strength to compete in these industries and satisfy our client's needs and requirement on an exceptionally high standard and work ethics. With local facilities to support small and medium equipment job, we believe that we can satisfy the client's needs.



Service Excellence  
Integrity  
Grow  
Awareness  
Professionalism



## COMPANY CULTURE

Be uphold by Service Excellent, Integrity, Growth, also Awareness in company culture, expected resources will achieve Professionalism



# Our Corporate Culture



SERVICE EXCELLENCE



INTEGRITY



GROW



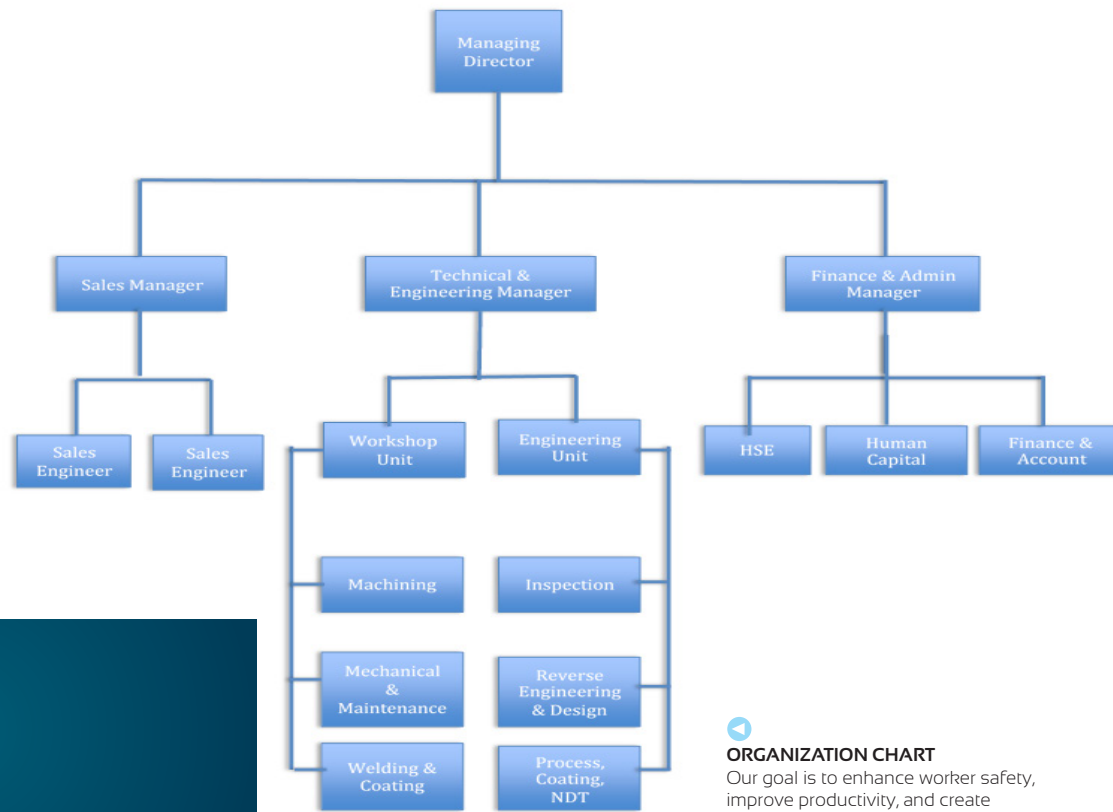
AWARENESS



PROFESSIONALISM







## Our Skilled Experts

With a good mentality and skills of employees, we are capable to meet the customer's requirement and expectation.



To be the one-stop workshop and the largest non-OEM in service and repair of turbomachinery equipment

We value our employees as one of our assets. With a good mentality and skills of employees, we are capable to meet the customer's requirement and expectation. Thus in the end, it will bring value to the shareholders. We strongly believe with our experience & exposure, we have the ability and strength to compete in these industries and satisfy our client's needs and requirement on an exceptionally high stan-

dard and work ethics. To realize our aspirations, it is our hope that we are given the chance to prove our capabilities and obtain the trust from our clients. Our goal is to enhance worker safety, improve productivity, and create confidence in the workplace. Above are our current and future planing of our manpower requisitions.

### 1 Company Secretary

Anuar Bin Bahador (MIA21217)

### 3 Auditors

Khairul Azhar & Co. (AF0969)

### 2 Legal Advisor

AHSA Advocates & Solicitors

### 4 Bankers

Al-Rajhi Bank



**JOINT OPERATION AT PORT DICKSON**  
Workshop team from PT. Taka Turbomachinery Indonesia, Malaysia and TNB Remaco just finished on-site maintenance at Port Dickson, Malaysia.

## Our Experiences





# Corporate Information

CO. NAME : TAKA MAINTENANCE (MALAYSIA) SDN BHD  
CO. REG. NO : 1117079 - D  
INCORPORATED : 10th November 2014

PHONE : +60 (3) 7804 2666  
FAX : +60 (3) 7804 2626



### Place of Business

Taka Maintenance (M)

No.5, Block C, Jalan Keluli  
7/110, Bukit Raja Business Park,  
Section 7, 40000 Shah Alam,  
Selangor.



### Corporate Office

Taka Maintenance (M)

W505-506, West Wing, C3A11,  
Centre Wing, Metropolitan  
Square, No. 2, Jalan PJU 8/1,  
Bandar Damansara Perdana,  
47820 Petaling Jaya, Selangor.



### Registered Office

Taka Maintenance (M)

E203, Kelana Parkview, No.  
1, Jalan SS 6/2, Kelana Jaya,  
47301 Petaling Jaya, Selangor.



### Head Office & Workshop

PT Taka Turbomachinery

Jl. Soekarno - Hatta No. 797  
Bandung 40294  
West Java - Indonesia

## Worldwide Branches

Flash back on 1998, 1<sup>st</sup> workshop operated by 1 employee in garage scale. By 2010, 2<sup>nd</sup> workshop operated with 80 Tons lifting capability, total building area more than 5000 m<sup>2</sup> & employed more than 100 workers. We have transformed to a heavy turbomachinery repair facility in Asia Pacific Region.



Start growing today



Start at  
[www.takamalaysia.com](http://www.takamalaysia.com)



# Get in Touch With Us

## TAKA Maintenance (M) Sdn Bhd

E203, Kelana Parkview,  
No. 1, Jalan SS 6/2, Kelana Jaya,  
47301 Petaling Jaya, Selangor.

Phone : +60 (3) 7804 2666  
Fax : +60 (3) 7804 2626

Email : [info@takamalaysia.com](mailto:info@takamalaysia.com)



scan QR code



All Rights Reserved | © Copyright 2015